

Eye Nuts

Eye Nuts

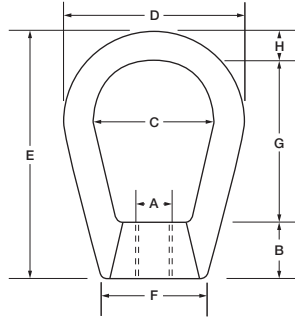
Eye Nuts

- Forged
- 1030 Carbon Steel, Stainless Steel
- Self-Colored, Galvanized* Plated & Electro-Polished
- Quenched & Tempered

Stock No.	*Tap Size A	Bail Size	Thread Length B	I.D. C	O.D. D	Overall Length E	Bell F	I.D. Length G	Ball Thickness H	Shoulder Width I	Rated Capacity (Lbs.)	Approx. Wt. Per 100 Pcs.
16020	3/8	1/2	5/8	1 1/4	1 3/4	2 1/2	1 3/16	1 9/16	3/8	3 1/32	2900	26.0
16021	1/2	1/2	5/8	1 1/4	1 3/4	2 1/2	1 3/16	1 9/16	3/8	3 1/32	3500	31.0
16022	3/8	1	1 1/16	1 1/2	2 1/4	3 3/16	1 3/16	2	1/2	1 3/8	2900	63.0
16023	1/2	1	1 1/16	1 1/2	2 1/4	3 3/16	1 3/16	2	1/2	1 3/8	5200	61.0
16024	5/8	1	1 1/16	1 1/2	2 1/4	3 3/16	1 3/16	2	1/2	1 3/8	5500	59.0
16025	3/4	1	1 1/16	1 1/2	2 1/4	3 3/16	1 3/16	2	1/2	1 3/8	5500	56.0

Ultimate Load is 5 times the Working Load Limit Rating based on standard tap size.

*Additional sizes available. Call for availability. Not recommended for lifting applications.

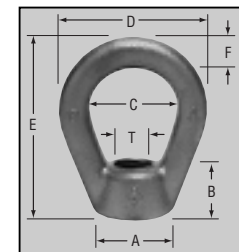


Self-Colored Stock No.	Hot Galvanized Stock No.	Thread Dia. T	A	B	C	D	E	F	Approx. Wt. Per 100 Pcs.	Rated Capacity
16037	16037G	3/8-16	7/8	5/8	1 1/4	2	2 1/2	3/8	22.0	2,700
16050	16050G	1/2-13	7/8	5/8	1 1/4	2	2 1/2	3/8	19.5	2,700
16062	16062G	5/8-11	1 3/8	3/4	1 1/2	2 1/2	3	1/2	60.0	5,000
16075	16075G	3/4-10	1 3/8	3/4	1 1/2	2 1/2	3	1/2	56.0	5,000
16087	16087G	7/8-9	2 1/32	1 11/32	1 5/8	3 3/8	3 31/32	7/8	182.0	10,000
16100	16100G	1-8	2 9/32	1 11/16	1 3/4	3 3/4	4 27/32	1 1/32	280.0	10,000
16125	16125G	1-1/4-7	2 7/8	2	2	4 1/2	5 5/8	1 1/4	625.0	29,400
16150	16150G	1-1/2-6	3 1/8	2 7/32	2 1/2	5 1/4	6 5/8	1 3/8	938.0	35,600

*Zinc plating available, add ZP prefix to part number when ordering.

Eye Nuts

- Forged
- 1030 Carbon Steel
- Self-Colored/ Hot Galvanized*



Stock No.	Thread Dia. T	Thread Length L	A	B	C	D	E	F	Approx. Wt. Per 100 Pcs.	Rated Capacity at 90°
16310	1-8	1 7/8	1 1/16	1 1/16	2 1/4	4	5	7/8	260.0	9,000
16315	1-1/4-7	1 3/4	2 7/8	2	2	4 1/2	5 5/8	1 1/4	640.0	10,000
16320	1-1/2-6	2	3 1/8	2 7/32	2 1/2	5 1/4	6 5/8	1 3/8	900.0	15,000



Designed for 90° lifts

MATERIAL: Eye Nut — Carbon Steel, Alloy Stud — 4340 Alloy Steel

FINISH: Self-Colored

SAFETY FACTOR: 5 to 1.

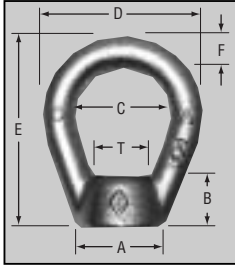


High-Strength Lifting Eyes Die Lifting Eyes

Eye Nuts

Stainless Steel Eye Nuts

- Forged
- 304 and 316 Stainless Steel



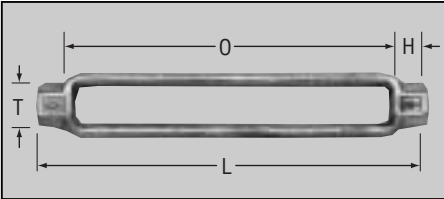
Stock No.	Thread Dia. T	A	B	C	D	E	F	Approx. Wt. Per 100 Pcs.	Rated Capacity
304 Stainless Steel									
SS16037	3/8-16	7/8	5/8	1 1/4	2	2 1/2	3/8	22.0	2,700
SS16050	1/2-13	7/8	5/8	1 1/4	2	2 1/2	3/8	19.5	2,700
SS16062	5/8-11	1 3/8	3/4	1 1/2	2 1/2	3	1/2	60.0	5,000
SS16075	3/4-10	1 3/8	3/4	1 1/2	2 1/2	3	1/2	56.0	5,000
SS16087	7/8-9	2 1/4	1 5/8	1 3/4	3	4	7/8	174.1	10,000
SS16100	1-8	2 1/4	1 5/8	1 3/4	3	4	7/8	167.2	10,000
316 Stainless Steel									
SS16237	3/8-16	7/8	5/8	1 1/4	2	2 1/2	3/8	22.0	2,700
SS16250	1/2-13	7/8	5/8	1 1/4	2	2 1/2	3/8	19.5	2,700
SS16262	5/8-11	1 3/8	3/4	1 1/2	2 1/2	3	1/2	60.0	5,000
SS16275	3/4-10	1 3/8	3/4	1 1/2	2 1/2	3	1/2	56.0	5,000

All stainless electropolished.

Turnbuckles

Turnbuckle Bodies

- Forged
- 1030 Carbon Steel
- Self-Colored/Hot Galvanized*



ASTM F1145-92, Type 1, Grade 1, Class B

NOTE: The galvanized bodies are tapped oversized.

Domestic		Import	Size in Inches		Body Head H	Approx. Length L	Wt. Per 100 Pcs.	Rated Capacity
Self-Colored Stock No.	Hot Galvanized Stock No.	Hot Galvanized Stock No.	Thread Dia. - T	Take-Up - O				
10604	10605	25500	1/4	x 4	7/16	4 7/8	11.0	500
10608	10609	25505	5/16	x 4 1/2	1/2	5 1/2	20.0	800
10612	10613	25510	3/8	x 6	9/16	7 1/8	33.0	1,200
10614	10615	-	1/2	x 3	3/4	4 1/2	30.0	2,200
10616	10617	25515	1/2	x 6	3/4	7 1/2	56.0	2,200
10620	10621	25520	1/2	x 9	3/4	10 1/2	70.0	2,200
10624	10625	25525	1/2	x 12	3/4	13 1/2	104.0	2,200
10626	10627	-	5/8	x 3	7/8	4 3/4	50.0	3,500
10628	10629	25530	5/8	x 6	7/8	7 3/4	85.0	3,500
10632	10633	25535	5/8	x 9	7/8	10 3/4	108.0	3,500
10636	10637	25540	5/8	x 12	7/8	13 3/4	145.0	3,500
10640	10641	25545	3/4	x 6	1 1/16	8 1/8	140.0	5,200
10644	10645	25550	3/4	x 9	1 1/16	11 1/8	186.0	5,200
10648	10649	25555	3/4	x 12	1 1/16	14 1/8	210.0	5,200
10652	10653	25560	3/4	x 18	1 1/16	20 1/8	320.0	5,200
10654	10655	25565	7/8	x 6	1 3/16	8 3/8	160.0	7,200
10656	10657	25570	7/8	x 12	1 3/16	14 3/8	272.0	7,200
10660	10661	25575	7/8	x 18	1 3/16	20 3/8	488.0	7,200
10664	10665	25580	1	x 6	1 3/8	8 3/4	218.0	10,000
10668	10669	25585	1	x 12	1 3/8	14 3/4	358.0	10,000
10672	10673	25590	1	x 18	1 3/8	20 3/4	470.0	10,000
10680	10681	-	1-1/4	x 6	1 3/4	9 1/2	324.0	15,200
10682	10683	-	1-1/4	x 12	1 3/4	9 1/2	324.0	15,200
10686	10687	-	1-3/8	x 6	1 13/16	9 5/8	615.0	17,400
10690	10681	-	1-3/8	x 12	1 7/8	15 3/4	970.0	17,400
10684	10685	-	1-1/2	x 6	2 1/8	10 1/4	590.0	21,400
10694	10695	-	1-1/2	x 12	2 1/8	10 1/4	590.0	21,400
10606	10607	-	1-5/8	x 6	2 1/2	11	980.0	24,500
10610	10611	-	1-5/8	x 12	2 3/4	17 1/2	1525.0	26,000
10688	10689	-	1-3/4	x 6	2 3/8	10 3/4	850.0	27,600
10696	10697	-	1-3/4	x 12	2 3/8	10 3/4	850.0	27,600
10622	10623	-	1-7/8	x 6	2 13/16	11 5/8	1400.0	37,000
10630	10631	-	1-7/8	x 12	2 3/4	17 1/2	1525.0	37,000
10692	10693	-	2	x 6	2 11/16	11 3/8	1280.0	37,500
10634	10635	-	2	x 12	2 3/4	17 1/2	1525.0	37,500
10638	10639	-	2-1/4	x 6	3 1/16	12 5/8	1960.0	48,000
10642	10643	-	2-1/4	x 12	3 13/16	19 5/8	3092.0	48,000
10646	10647	-	2-3/8	x 6	3 3/4	13 1/2	2325.0	52,500
10650	10651	-	2-1/2	x 6	3 3/4	13 1/2	2325.0	60,000
10658	10659	-	2-1/2	x 12	3 3/4	19 1/2	3092.0	60,000