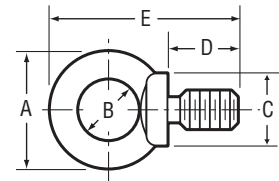


DIN 580/582 Eye Bolts & Nuts & Pad "D" Eyes

Metric Eye Bolts

Manufactured to European Standards

- DIN 580
- 1015 Carbon Steel
- Self-Colored
- Forged



Stock No.	Size	O.D. Eye A	I.D. Eye B	Width of Shoulder C	Shank Length D	Overall Length E	Approx. Wt. Per C in Lbs.	Rated Capacity in Kgs.
58006	6MM	27	15	15	13	27	4.9	70
58008	8MM	36	20	20	13	36	13.2	140
58010	10MM	45	25	25	17	45	24.2	230
58012	12MM	54	30	30	20.5	53	39.6	340
58014	14MM	63	35	35	27	62	55	490
58016	16MM	63	35	35	27	62	61.6	700
58020	20MM	72	40	40	30	71	100	1200
58024	24MM	90	50	50	36	90	162.8	1800
58030	30MM	108	60	65	45	109	365.2	3600
58036	36MM	126	70	75	54	128	583	5100
58042	42MM	144	80	85	63	147	886.6	7000

All dimensions are in millimeters.

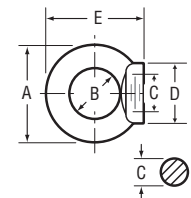
*Zinc Plating Special Order

NOTE: These products are manufactured to Edward W. Daniel Co. quality standards via global contracts.

Metric Eye Nuts

Manufactured to European Standards

- DIN 582
- 1015 Carbon Steel
- Self-Colored
- Forged



Stock No.	Size	O.D. Eye A	I.D. Eye B	Thread Dia. C	Width of Shoulder D	Overall Length E	Approx. Wt. Per C in Kgs.
58208	8MM	36	20	8-1.25	20	36	10.6
58210	10MM	45	25	10-1.5	25	45	19.4
58212	12MM	54	30	12-1.75	30	53	31.7
58214	14MM	54	36	14-2	36	52	38
58216	16MM	63	35	16-2	35	62	49.3
58220	20MM	72	40	20-2.5	40	71	80
58224	24MM	90	50	24-3	50	90	130.3
58230***	30MM	108	60	30-3.5	65	109	292.2

All dimensions are in millimeters.

Rated capacities are same as above when properly installed. (See DIN 580)

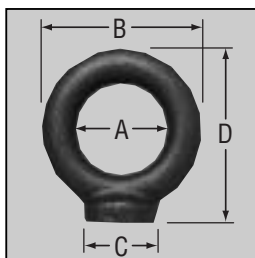
*Zinc Plating Special Order

NOTE: These products are manufactured to Edward W. Daniel Co. quality standards via global contracts.

***These products will be discontinued when stock is depleted.

Pad "D" Eyes

- Forged Carbon Steel
- Self-Colored



Stock No.	I.D. Eye A	O.D. Eye B	Width of Shoulder C	Overall Length D	Approx. Wt. Per 100 Pcs.
41500	3/4	1 1/16	17/32	1 3/8	7.5
41502	7/8	1 7/16	19/32	1 11/16	9.4
41503	1	1 1 1/16	21/32	2	11.0
41504	1 1/16	2 1/8	29/32	2 7/16	16.0
41506	1 3/8	2 9/16	1 1/32	3	56.0
41507	1 1/2	2 13/16	1 3/16	3 1/4	86.0

Not recommended for Lifting.