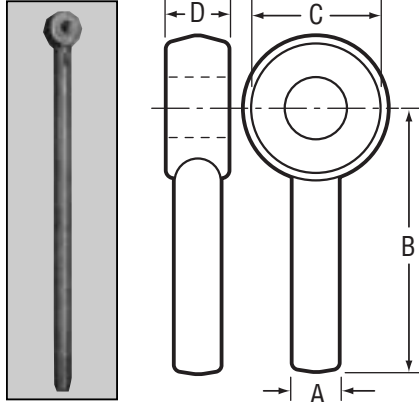


# Rod Ends

## Rod Ends

- Forged
- 1030 Carbon Steel & 4140 Alloy\*
- Self-Colored



- Shank lengths can vary -  $\frac{1}{4} + \frac{1}{2}$
- Standard forging tolerances  $\pm \frac{1}{32}$

**Self-colored will always be furnished unless otherwise specified.**

### INFORMATION REQUIRED:

- (A) Shank diameter
- (B) Length center of eye to end
- (C) Head/Boss diameter
- (D) Head thickness

4140 Heat treated to B7

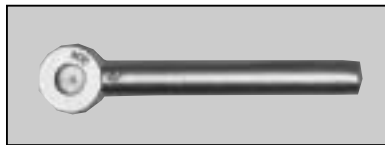
## Blanks

1030 Stock No.	4140 Stock No.	Shank Diameter Inches A	Center of Eye to End B	Head Diameter Inches C	Head Thickness Inches D	Approx. Wt. Per 100 Pcs.
R-18004***	—	1/4	1 3/4	1 5/32	5/16	3.5
R-18010***	—	1/4	2	1/2	9/32	4.5
R-18006	—	1/4	2 1/2	1/2	9/32	4.5
R-18022	—	5/16	1 3/4	5/8	1 1/32	14.0
R-18020	—	5/16	4	3/4	5/16	13.0
R-18024***	—	5/16	2	1 3/16	7/16	15.0
R-18048	—	3/8	6	1 1/16	7/16	24.0
—	RA-18048	3/8	6	1 1/16	7/16	24.0
R-18044	—	3/8	12	1 1/16	7/16	—
R-18052***	—	7/16	4 3/8	1 3/16	1/2	45.0
R-18065	—	1/2	6	1 5/16	9/16	45.0
—	RA-18065	1/2	6	1 5/16	9/16	45.0
R-18055***	—	1/2	7	1 5/16	9/16	45.0
R-18070	—	1/2	12	1 5/16	9/16	90.0
—	RA-18070	1/2	12	1 5/16	9/16	90.0
R-18059	—	1/2	18	1 5/16	9/16	98.0
—	RA-18059	1/2	18	1 5/16	9/16	130.0
R-18056***	—	1/2	2 3/4	1 1/16	9/16	40.0
R-18075	—	1/2	6	1 1/8	1/2	36.0
R-18090	—	1/2	18	1 1/8	1/2	102.0
R-18105	—	5/8	6	1 3/16	1 1/16	73.0
—	RA-18105	5/8	6	1 3/16	1 1/16	73.0
R-18110	—	5/8	12	1 3/16	1 1/16	130.0
—	RA-18110	5/8	12	1 3/16	1 1/16	130.0
R-18117	—	5/8	18	1 3/16	1 1/16	172.0
—	RA-18117	5/8	18	1 3/16	1 1/16	185.0
R-18130	—	3/4	6	1 7/16	1 3/16	110.0
—	RA-18130	3/4	6	1 7/16	1 3/16	110.0
R-18135	—	3/4	12	1 7/16	1 3/16	200.0
—	RA-18135***	3/4	12	1 7/16	1 3/16	200.0
R-18137	—	3/4	18	1 7/16	1 3/16	243.0
—	RA-18137	3/4	18	1 7/16	1 3/16	315.0
R-18150	—	7/8	6	1 11/16	1 5/16	159.0
—	RA-18150***	7/8	6	1 11/16	1 5/16	159.0
R-18155	—	7/8	12	1 11/16	1 5/16	265.0
—	RA-18155	7/8	12	1 11/16	1 5/16	265.0
R-18162	—	7/8	18	1 11/16	1 5/16	298.0
R-18170	—	1	6	2	1	213.0
—	RA-18170***	1	6	2	1	213.0
R-18175	—	1	12	2	1	350.0
—	RA-18175	1	12	2	1	350.0
R-18181	—	1	18	2	1	403.0
R-18194	—	1-1/4	12	2 1/2	1 1/4	575.0
R-18200	—	1-1/4	18	2 1/2	1 1/4	625.0
R-18210	—	1-1/2	18	3	1 1/2	650.0
R-18214	—	1-3/4	18	3 1/2	1 3/4	675.0
R-18218	—	2	18	4	2	700.0

\*Not heat treated. \*\*\*These products will be discontinued when stock is depleted.

## Stainless Steel Rod Ends

- Forged
- 304 and 316 Stainless Steel



## Blanks

304 Stock No.	316 Stock No.	Shank Diameter Inches A	Center of Eye to End B	Head Diameter Inches C	Head Thickness Inches D	Approx. Wt. Per 100 Pcs.
SSR18050	SSR31670	3/8	6	1 1/16	7/16	25.0
SSR18065	SSR31675	1/2	6	1 5/16	9/16	50.0
SSR18070	SSR31677	1/2	12	1 5/16	9/16	75.0
SSR18105	SSR31680	5/8	6	1 3/16	1 1/16	89.0
SSR18110	SSR31682	5/8	12	1 3/16	1 1/16	153.0
SSR18114	—	5/8	18	1 3/16	1 1/16	200.0
SSR18130	SSR31685	3/4	6	1 7/16	1 3/16	125.0
SSR18135	SSR31687	3/4	12	1 7/16	1 3/16	216.0
SSR18137	SSR31689	3/4	18	1 7/16	1 3/16	304.0
SSR18150	SSR31690	7/8	6	1 11/16	1 5/16	190.0
SSR18155	SSR31692	7/8	12	1 11/16	1 5/16	302.0
SSR18160	—	7/8	18	1 11/16	1 5/16	398.0
SSR18170	SSR31695	1	6	2	1	250.0
SSR18175	SSR31697	1	12	2	1	430.0
SSR18177	—	1	18	2	1	550.0

All stainless electropolished.