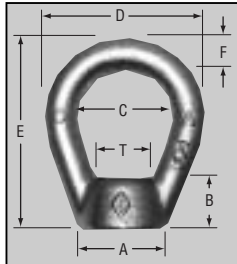


# Eye Nuts

## Stainless Steel Eye Nuts

- Forged
- 304 and 316 Stainless Steel



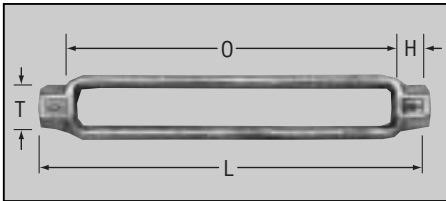
Stock No.	Thread Dia. T	A	B	C	D	E	F	Approx. Wt. Per 100 Pcs.	Rated Capacity
<b>304 Stainless Steel</b>									
SS16037	3/8-16	7/8	5/8	1 1/4	2	2 1/2	3/8	22.0	2,700
SS16050	1/2-13	7/8	5/8	1 1/4	2	2 1/2	3/8	19.5	2,700
SS16062	5/8-11	1 3/8	3/4	1 1/2	2 1/2	3	1/2	60.0	5,000
SS16075	3/4-10	1 3/8	3/4	1 1/2	2 1/2	3	1/2	56.0	5,000
SS16087	7/8-9	2 1/4	1 5/8	1 3/4	3	4	7/8	174.1	10,000
SS16100	1-8	2 1/4	1 5/8	1 3/4	3	4	7/8	167.2	10,000
<b>316 Stainless Steel</b>									
SS16237	3/8-16	7/8	5/8	1 1/4	2	2 1/2	3/8	22.0	2,700
SS16250	1/2-13	7/8	5/8	1 1/4	2	2 1/2	3/8	19.5	2,700
SS16262	5/8-11	1 3/8	3/4	1 1/2	2 1/2	3	1/2	60.0	5,000
SS16275	3/4-10	1 3/8	3/4	1 1/2	2 1/2	3	1/2	56.0	5,000

All stainless electropolished.

# Turnbuckles

## Turnbuckle Bodies

- Forged
- 1030 Carbon Steel
- Self-Colored/Hot Galvanized\*



ASTM F1145-92, Type 1, Grade 1, Class B

NOTE: The galvanized bodies are tapped oversized.

Domestic		Import	Size in Inches		Body Head H	Approx. Length L	Wt. Per 100 Pcs.	Rated Capacity
Self-Colored Stock No.	Hot Galvanized Stock No.	Hot Galvanized Stock No.	Thread Dia. - T	Take-Up - O				
10604	10605	25500	1/4	x 4	7/16	4 7/8	11.0	500
10608	10609	25505	5/16	x 4 1/2	1/2	5 1/2	20.0	800
10612	10613	25510	3/8	x 6	9/16	7 1/8	33.0	1,200
10614	10615	-	1/2	x 3	3/4	4 1/2	30.0	2,200
10616	10617	25515	1/2	x 6	3/4	7 1/2	56.0	2,200
10620	10621	25520	1/2	x 9	3/4	10 1/2	70.0	2,200
10624	10625	25525	1/2	x 12	3/4	13 1/2	104.0	2,200
10626	10627	-	5/8	x 3	7/8	4 3/4	50.0	3,500
10628	10629	25530	5/8	x 6	7/8	7 3/4	85.0	3,500
10632	10633	25535	5/8	x 9	7/8	10 3/4	108.0	3,500
10636	10637	25540	5/8	x 12	7/8	13 3/4	145.0	3,500
10640	10641	25545	3/4	x 6	1 1/16	8 1/8	140.0	5,200
10644	10645	25550	3/4	x 9	1 1/16	11 1/8	186.0	5,200
10648	10649	25555	3/4	x 12	1 1/16	14 1/8	210.0	5,200
10652	10653	25560	3/4	x 18	1 1/16	20 1/8	320.0	5,200
10654	10655	25565	7/8	x 6	1 3/16	8 3/8	160.0	7,200
10656	10657	25570	7/8	x 12	1 3/16	14 3/8	272.0	7,200
10660	10661	25575	7/8	x 18	1 3/16	20 3/8	488.0	7,200
10664	10665	25580	1	x 6	1 3/8	8 3/4	218.0	10,000
10668	10669	25585	1	x 12	1 3/8	14 3/4	358.0	10,000
10672	10673	25590	1	x 18	1 3/8	20 3/4	470.0	10,000
10680	10681	-	1-1/4	x 6	1 3/4	9 1/2	324.0	15,200
10682	10683	-	1-1/4	x 12	1 3/4	9 1/2	324.0	15,200
10686	10687	-	1-3/8	x 6	1 13/16	9 5/8	615.0	17,400
10690	10681	-	1-3/8	x 12	1 7/8	15 3/4	970.0	17,400
10684	10685	-	1-1/2	x 6	2 1/8	10 1/4	590.0	21,400
10694	10695	-	1-1/2	x 12	2 1/8	10 1/4	590.0	21,400
10606	10607	-	1-5/8	x 6	2 1/2	11	980.0	24,500
10610	10611	-	1-5/8	x 12	2 3/4	17 1/2	1525.0	26,000
10688	10689	-	1-3/4	x 6	2 3/8	10 3/4	850.0	27,600
10696	10697	-	1-3/4	x 12	2 3/8	10 3/4	850.0	27,600
10622	10623	-	1-7/8	x 6	2 13/16	11 5/8	1400.0	37,000
10630	10631	-	1-7/8	x 12	2 3/4	17 1/2	1525.0	37,000
10692	10693	-	2	x 6	2 11/16	11 3/8	1280.0	37,500
10634	10635	-	2	x 12	2 3/4	17 1/2	1525.0	37,500
10638	10639	-	2-1/4	x 6	3 1/16	12 5/8	1960.0	48,000
10642	10643	-	2-1/4	x 12	3 13/16	19 5/8	3092.0	48,000
10646	10647	-	2-3/8	x 6	3 3/4	13 1/2	2325.0	52,500
10650	10651	-	2-1/2	x 6	3 3/4	13 1/2	2325.0	60,000
10658	10659	-	2-1/2	x 12	3 3/4	19 1/2	3092.0	60,000

# Turnbuckles

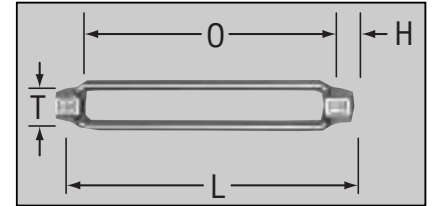
Stock No.	Size in Inches		Head H	Body Length L	Approx. Wt. Per 100 Pcs.	Rated Capacity
	Thread Dia. T	Take-Up O				
SS10612	<b>3/8</b>	x 6	9/16	7 1/8	33.0	1,200
SS10616	<b>1/2</b>	x 6	3/4	7 1/2	56.0	2,200
SS10628	<b>5/8</b>	x 6	7/8	7 3/4	85.0	3,500
SS10640	<b>3/4</b>	x 6	1 1/16	8 1/8	140.0	5,200

All stainless electropolished.

For sizes 1" - 2 1/2" call for price and availability.

## Stainless Steel Turnbuckle Bodies

- Forged
- 304 & 316 Stainless Steel

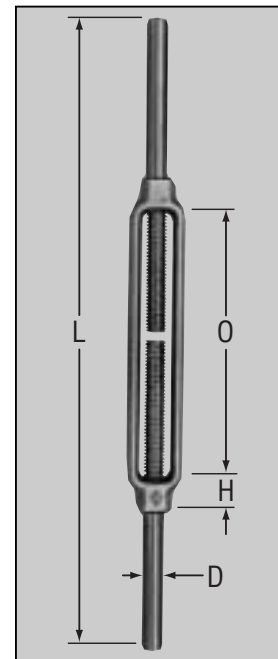


Stock No.	Size in Inches		Head H	Average Overall Length Closed L	Approx. Wt. Per 100 Pcs.	Rated Capacity
	Stub Dia. D	Take-Up O				
10504	<b>1/4</b>	x 4	7/16	9	21.0	500
10508	<b>5/16</b>	x 4 1/2	1/2	11	40.0	800
10512	<b>3/8</b>	x 6	9/16	13	70.0	1,200
10514	<b>1/2</b>	x 3	3/4	11	90.0	2,200
10516	<b>1/2</b>	x 6	3/4	14	125.0	2,200
10520	<b>1/2</b>	x 9	3/4	17	152.0	2,200
10524	<b>1/2</b>	x 12	3/4	20	195.0	2,200
10526	<b>5/8</b>	x 3	7/8	12	145.0	3,500
10528	<b>5/8</b>	x 6	7/8	15	195.0	3,500
10532	<b>5/8</b>	x 9	7/8	18	245.0	3,500
10536	<b>5/8</b>	x 12	7/8	21	300.0	3,500
10540	<b>3/4</b>	x 6	1 1/16	16	320.0	5,200
10544	<b>3/4</b>	x 9	1 1/16	19	390.0	5,200
10548	<b>3/4</b>	x 12	1 1/16	22	440.0	5,200
10554	<b>7/8</b>	x 6	1 3/16	17	430.0	7,200
10556	<b>7/8</b>	x 12	1 3/16	23	570.0	7,200
10564	<b>1</b>	x 6	1 3/8	18	578.0	10,000
10568	<b>1</b>	x 12	1 3/8	24	804.0	10,000
10572	<b>1</b>	x 18	1 3/8	30	1020.0	10,000
10580	<b>1-1/4</b>	x 6	1 3/4	19	930.0	15,200
10584	<b>1-1/2</b>	x 6	2 1/8	20	1530.0	21,400

Safety factor 5 to 1.  
ASTM F1145-92, Class C

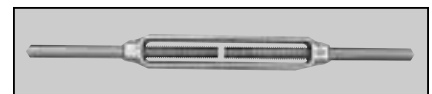
## Stub End Turnbuckles

- Forged
- 1030 Carbon Steel
- Self-Colored



## Stub End Turnbuckles

- Forged
- 304 Stainless Steel



Part No.	Size in Inches		Take-Up	Wt. Per 100 Pcs.
	Approx. Thread Dia.			
SS10512	<b>3/8</b>	x 6	6	70.0
SS10516	<b>1/2</b>	x 6	6	125.0
SS10528	<b>5/8</b>	x 6	6	195.0
SS10540	<b>3/4</b>	x 6	6	320.0